

SQL Server 2005 Expressi paigaldamine

Laadige alla .NET Framework 2.0

<http://www.microsoft.com/downloads/details.aspx?FamilyID=0856eacb-4362-4b0d-8edd-aab15c5e04f5>

Avage <http://www.microsoft.com/express/2005/sql/download/default.aspx>

Ja laadige alla [Install Microsoft SQL Server 2005 Express Edition](#)

NB!(selles installis on SP2 juba sees)

Lisaks võib ka laadida SQL serveri haldamisvahendi

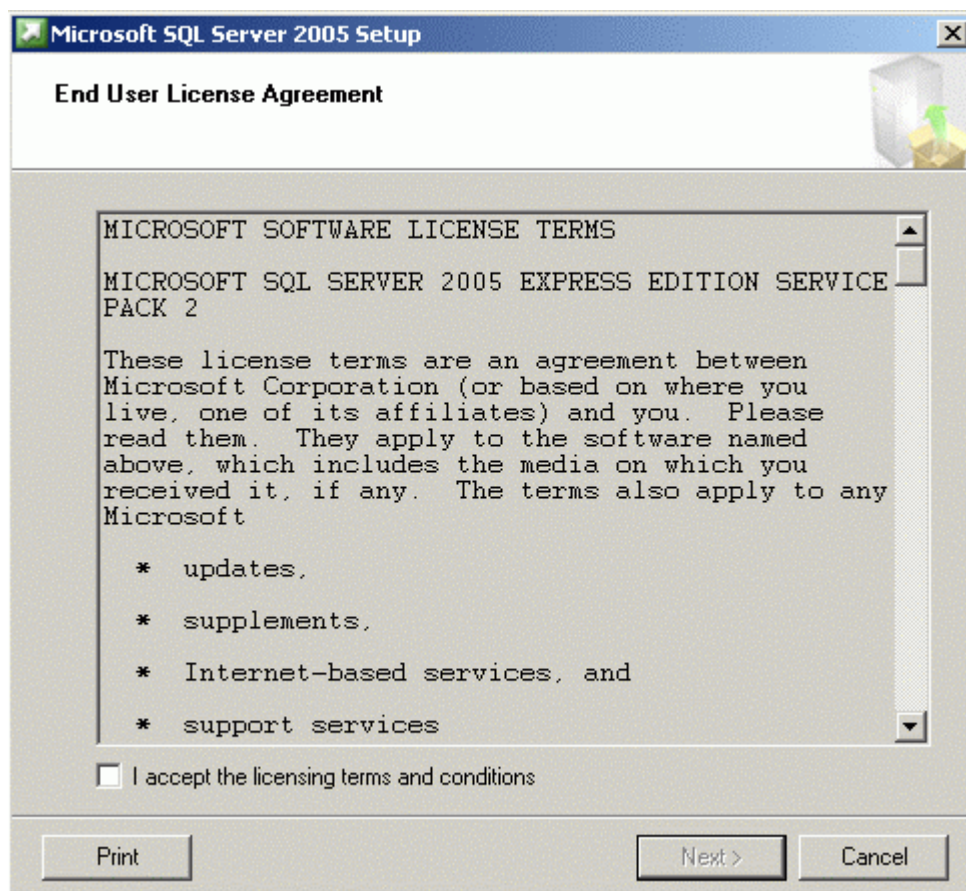
[SQL Server Management Studio Express](#)

Selle paigaldus on näidatud Lisa 2-s.

Käivitage kõigepealt dotnetfx.exe ja oodake kuni paigaldus on lõppenud.

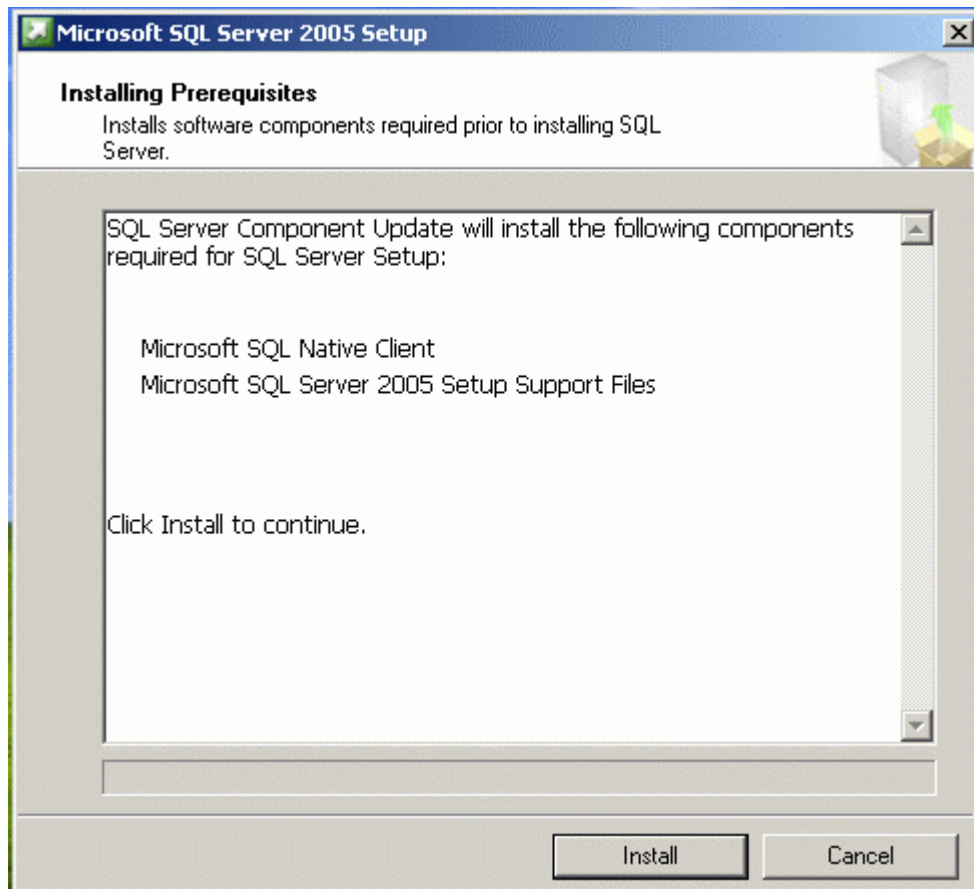
Käivitage sqlexpr32.exe.

Kuvatakse teade litsensitingimustest. Lugege läbi ja pange linnuke "I accept the licensing terms and conditions ette".



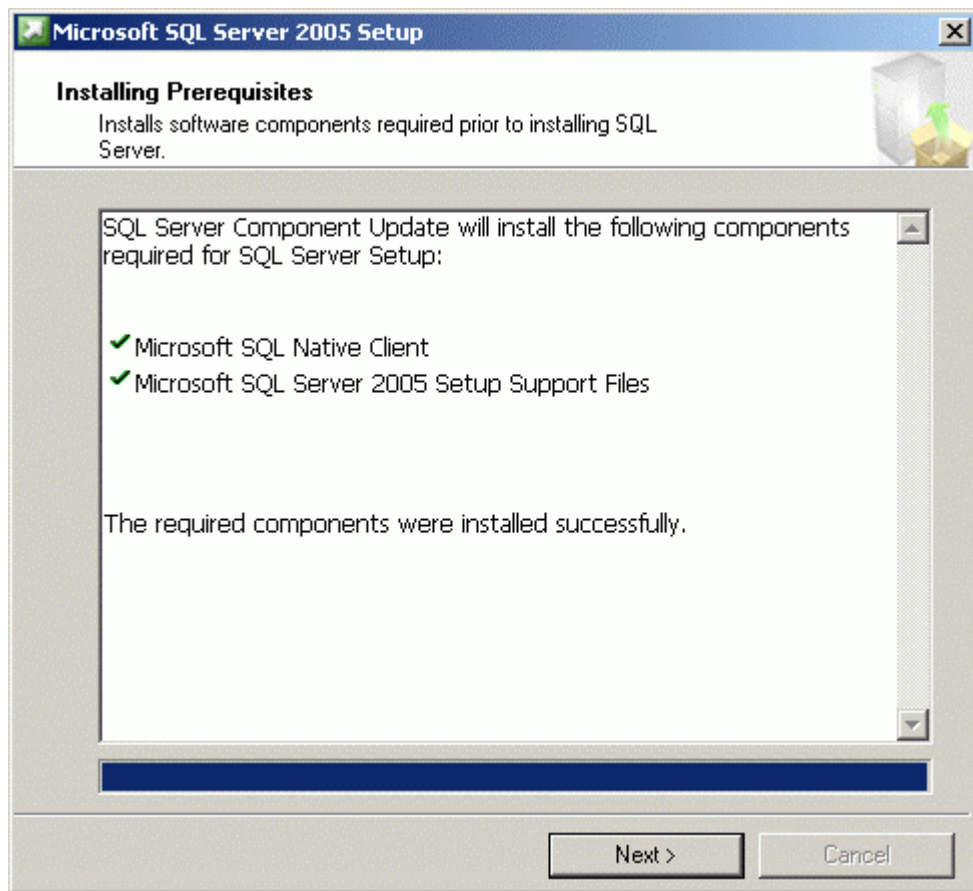
Vajutage Next.

Kui paigaldus on esmakordne, siis ilmub teade:



Vajutage Install.

Natukese aja pärast avaneb aken “The required components were installed successfully”.



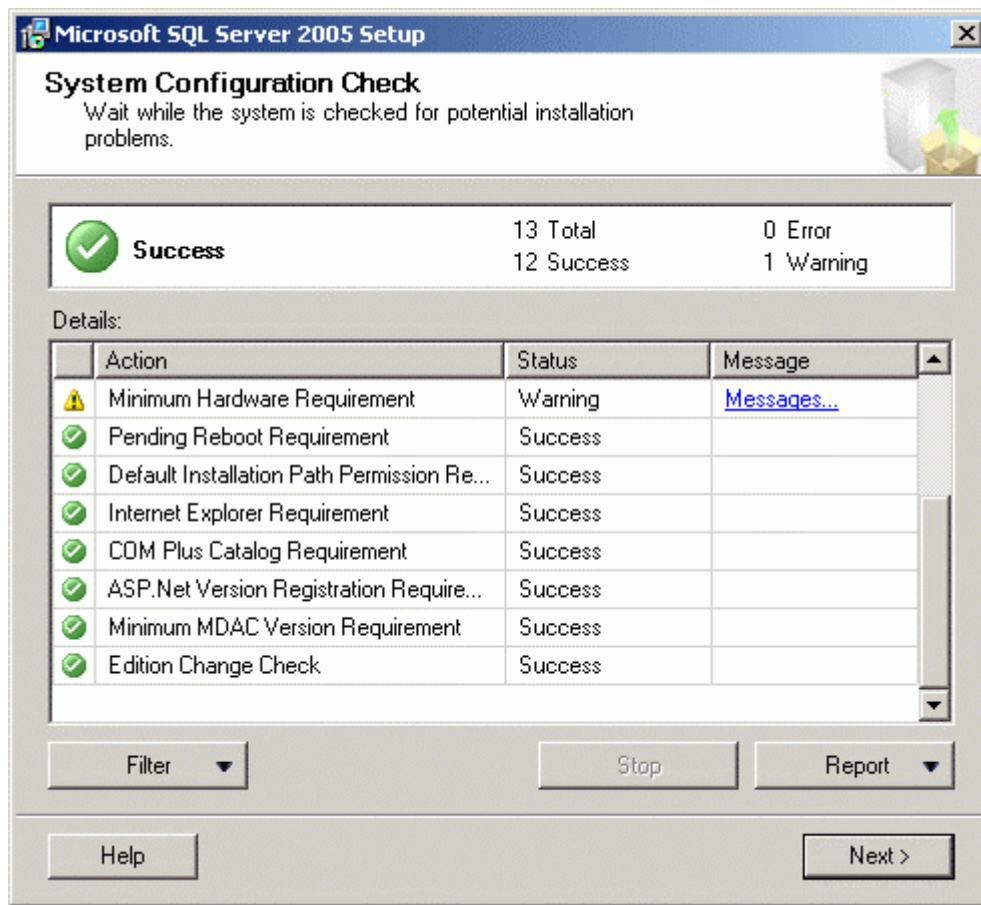
Vajutage Next

Käivitatakse SQL Server Installation Wizard.



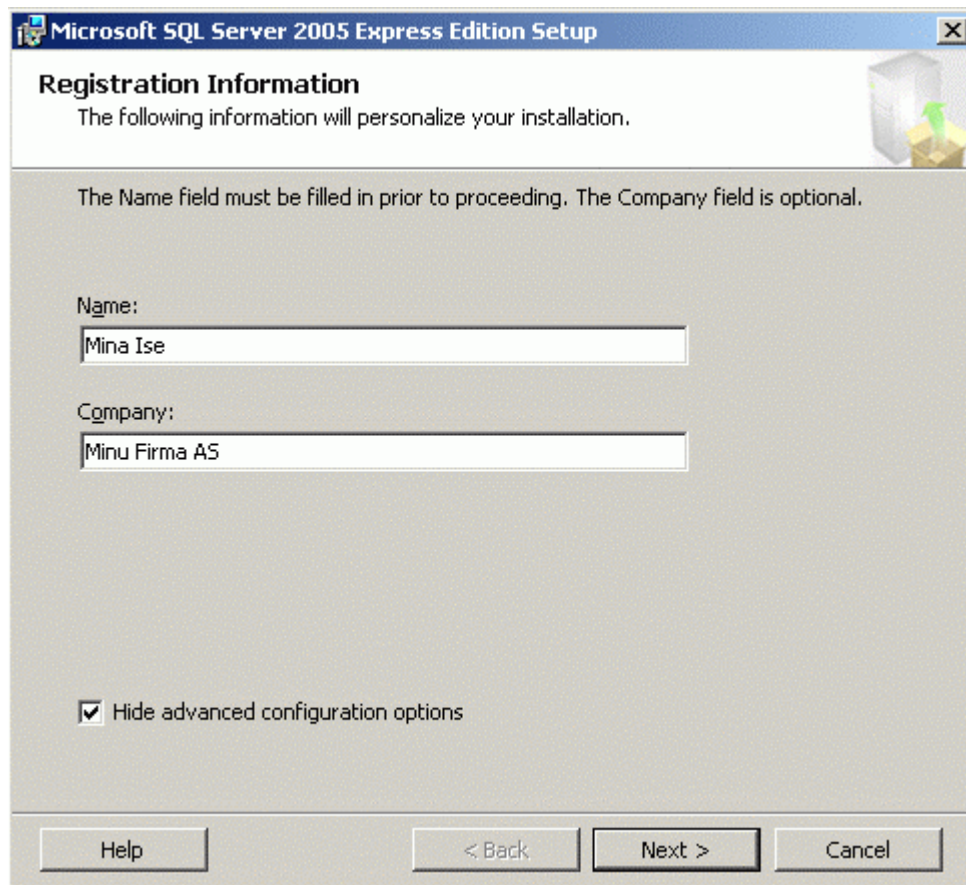
Vajutage Next

Kävitub System Configuration Check



Kui mingid süsteemi parameetrid ei sobi SQL Server Expressi paigalduseks, siis vastavasse kohta esimesse tulpa kollane hüüumärk ja Messages tulpa ilmub täpsustav teade, mis konkreetselt on valesti. Hoiatuste korral lubatakse paigaldamist jätkata, vigade korral mitte. Vajutage Next.

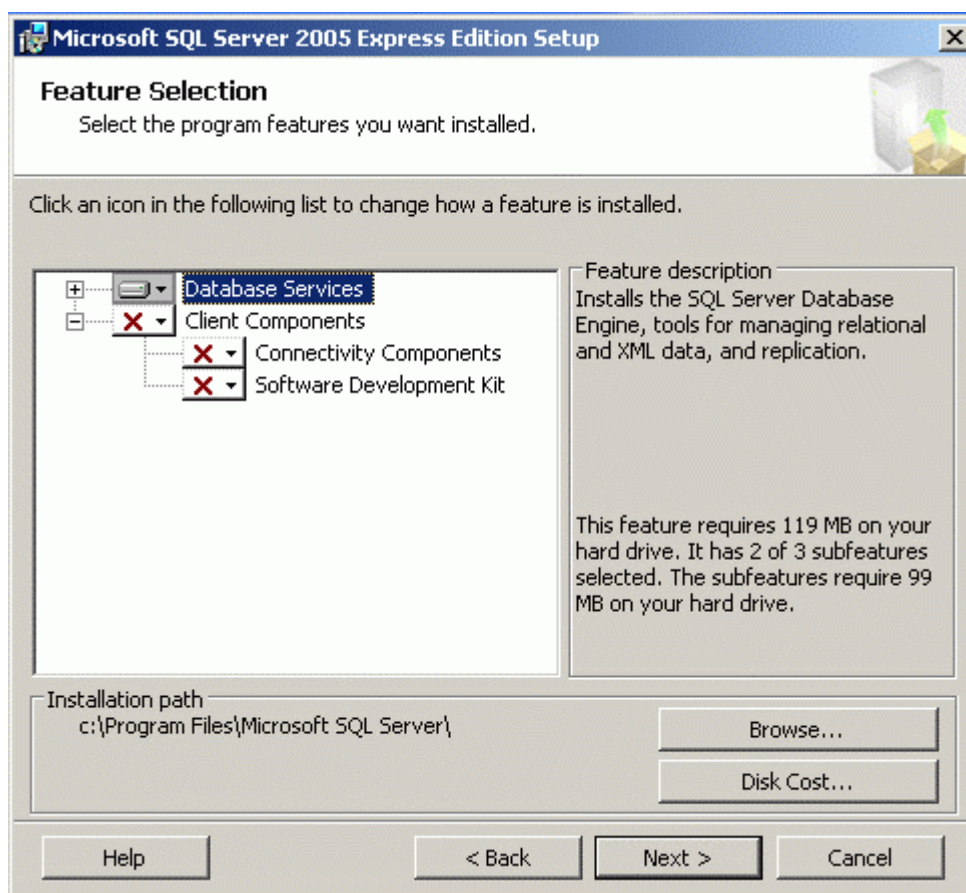
Küsitakse registreerimisinfot ja küsitakse, kas peita täpsemad paigaldusvalikud.



The screenshot shows the 'Registration Information' dialog box from the Microsoft SQL Server 2005 Express Edition Setup. The title bar reads 'Microsoft SQL Server 2005 Express Edition Setup'. The main heading is 'Registration Information', followed by the text 'The following information will personalize your installation.' Below this, a note states: 'The Name field must be filled in prior to proceeding. The Company field is optional.' There are two text input fields: 'Name:' with the value 'Minu Ise' and 'Company:' with the value 'Minu Firma AS'. At the bottom, there is a checked checkbox labeled 'Hide advanced configuration options'. The dialog box has four buttons at the bottom: 'Help', '< Back', 'Next >', and 'Cancel'.

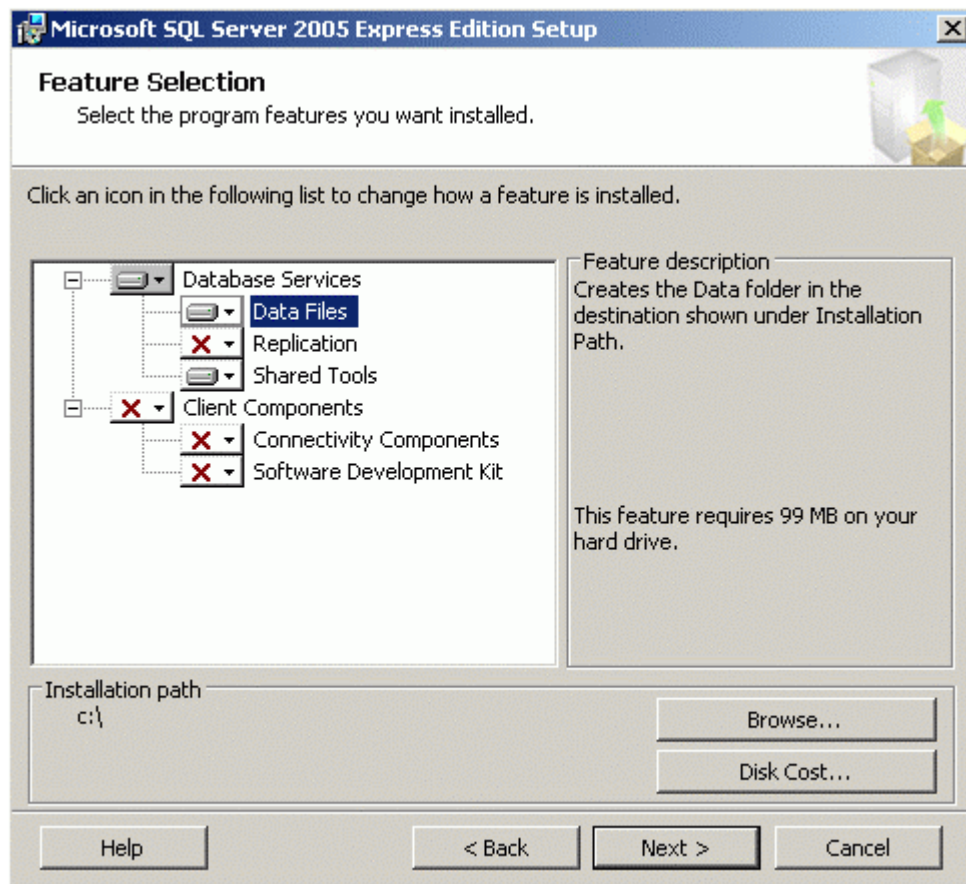
Kindlasti eemaldage linnuke “Hide advanced configuration options” eest. Vajutage Next.

Kuvatakse paigaldatavate komponentide nimekiri:



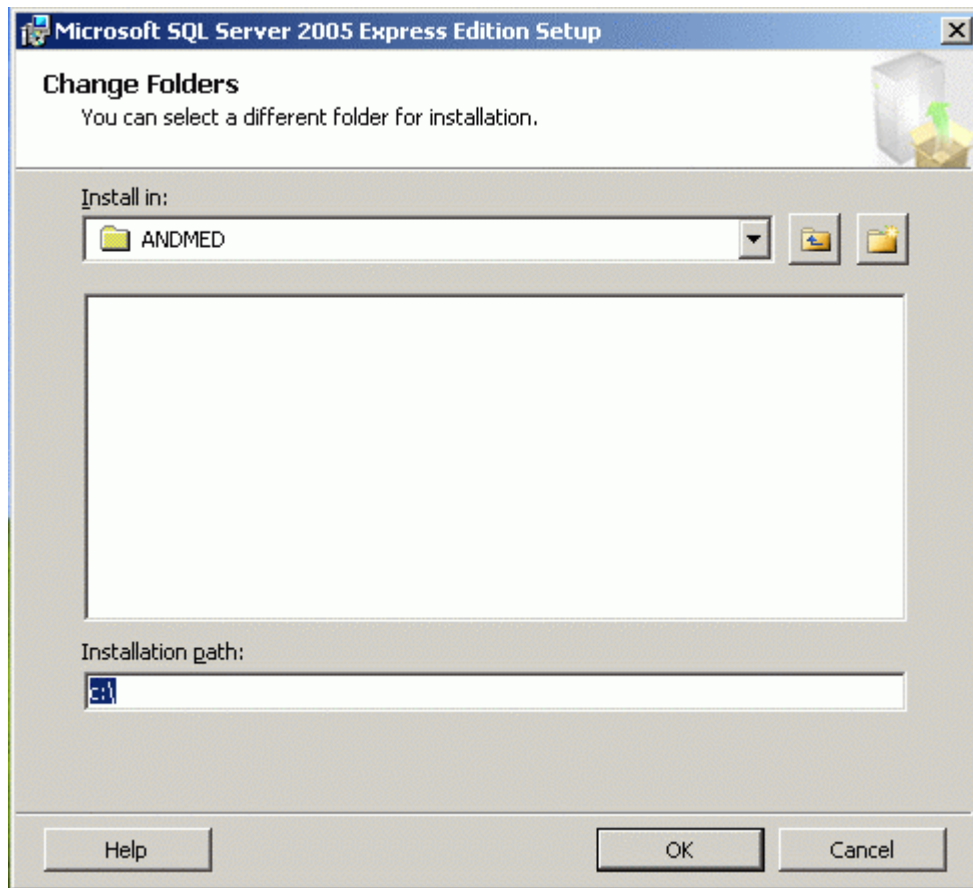
Lisage "Connectivity Components". Selleks klõpsake hiirega "Connectivity Components" peale ja valige "Will be installed on local hard drive"

Kui te ei soovi paigaldada andmefaile vaikimisi asukohta, siis klõpsake lahti Database Services ja valige Data files



Vajutage Browse

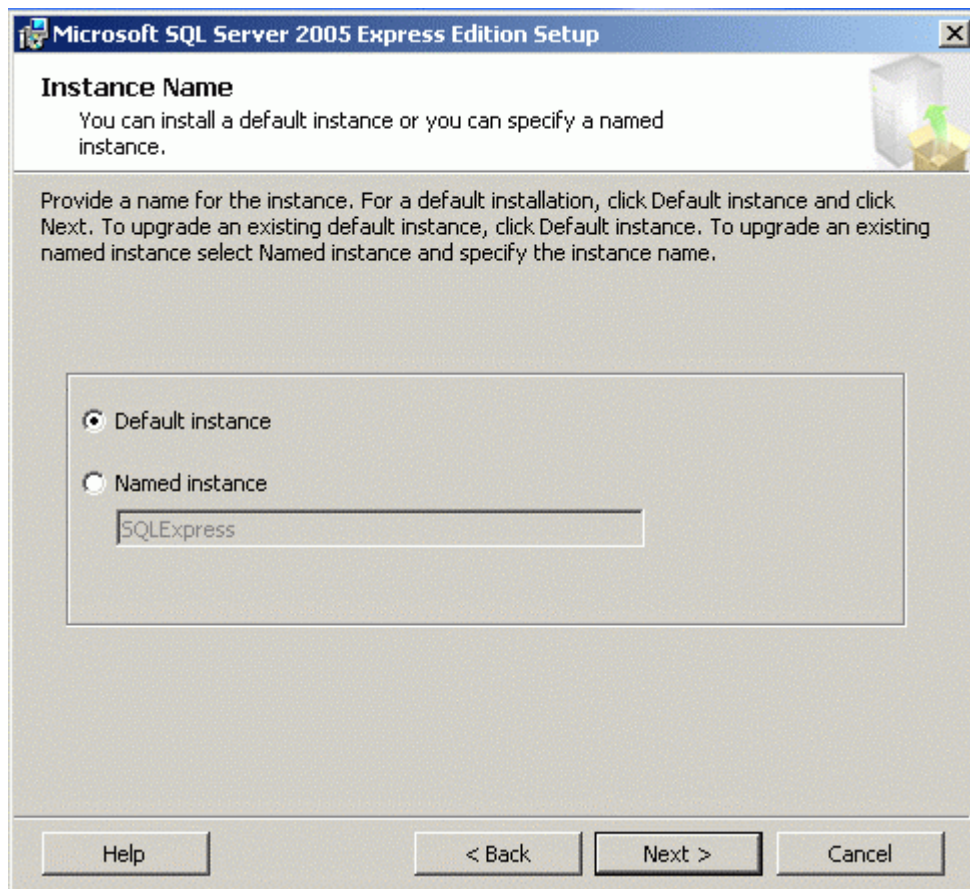
Ja näidake ära tee soovitud andmefailide kataloogini:



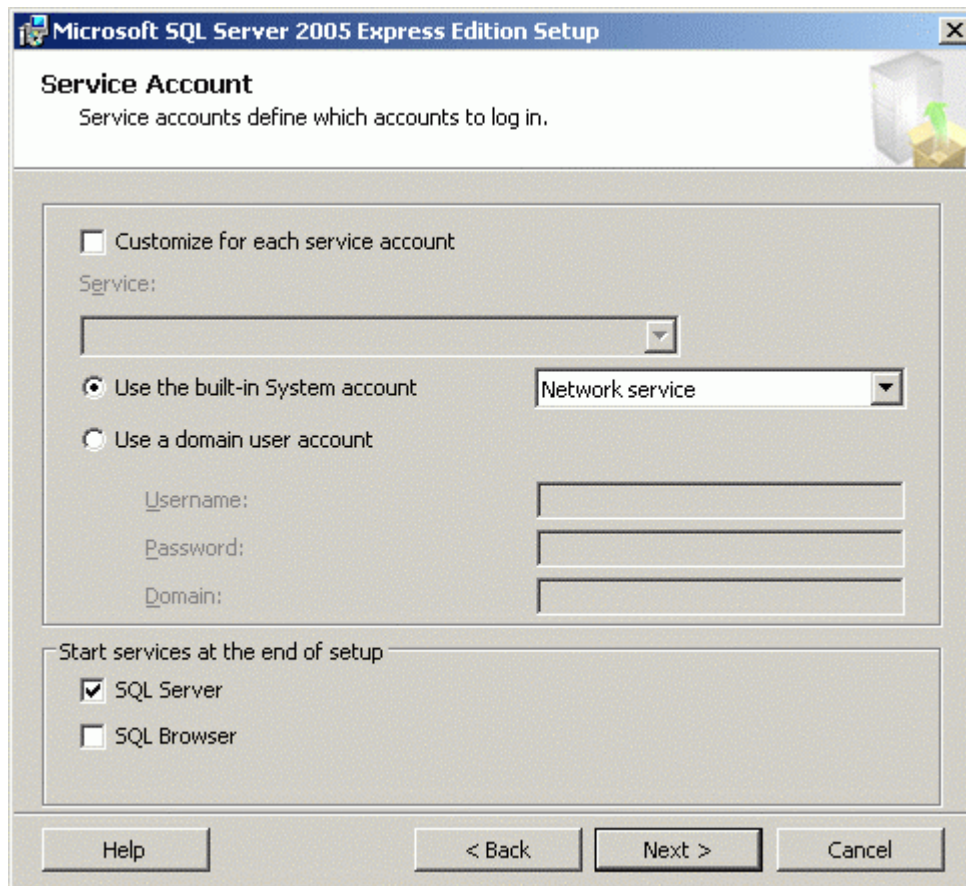
Valige sobiv kataloog või kirjutage sobiv tee reale Installation path. Vajutage OK.

Vajutage Next.

Küsitakse Instance Name.



Kui masinasse ei ole plaanis paigaldada rohkem SQL servereid, siis valige Default Instance. Vajutage Next.



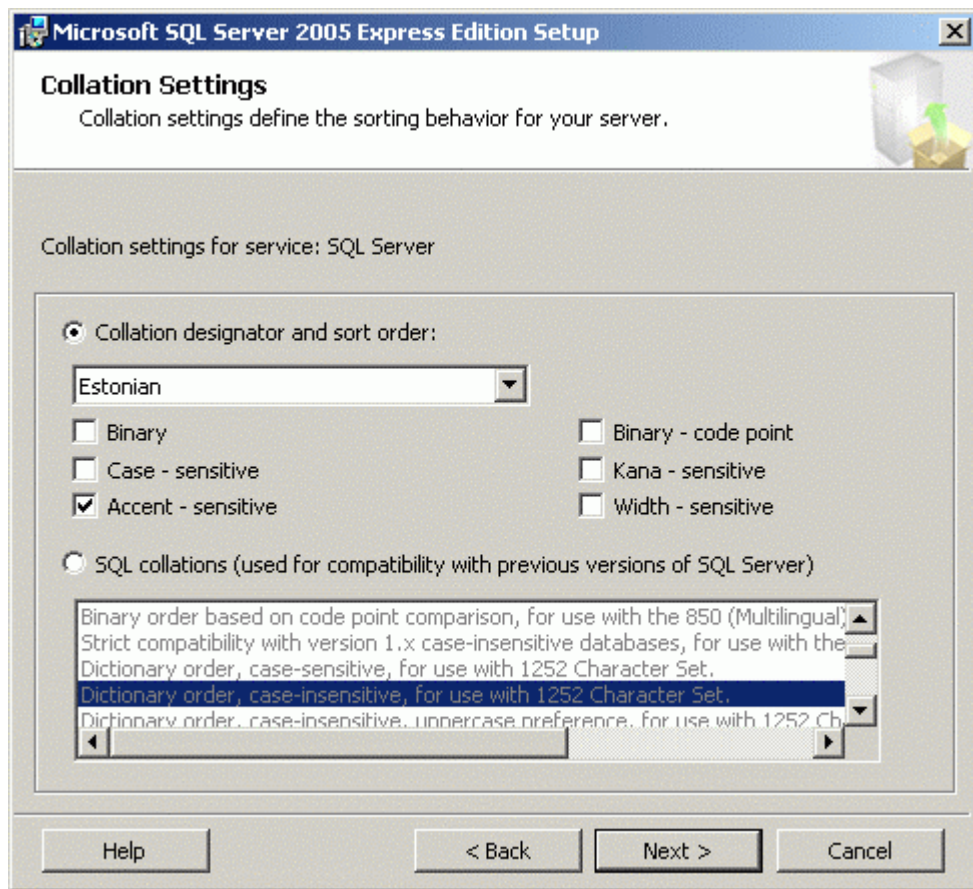
Võtke maha linnuke “Customize for each service account” eest.
Valige Use the built-in System account ja Network service.
Pange linnuke osas Start services at the end of setup “SQL Server” ette.
Vajutage Next.

Avaneb Authentication Mode aken.



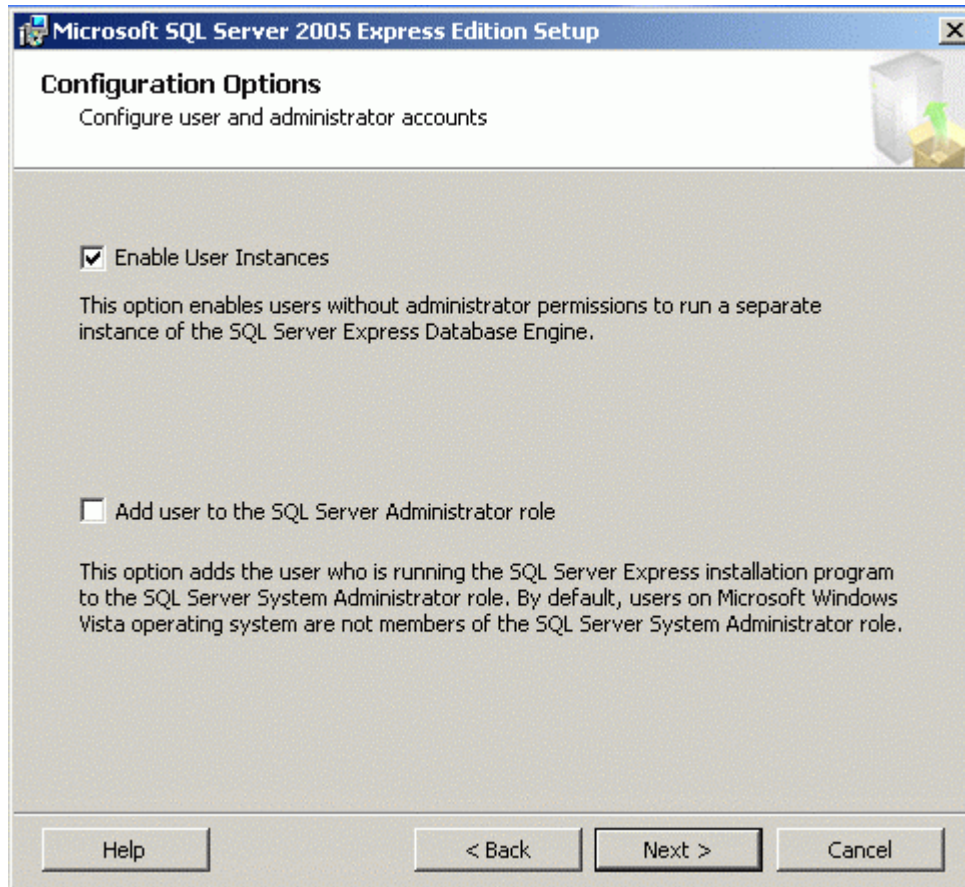
Valige Mixed Mode (Windows Authentication and SQL Server Authentication)
Sisestage kasutaja sa parool reale Enter password ja sama parool uuesti reale
“Confirm password”. Tühi parool pole lubatud! Jätke parool meelde ja SÄILITAGE
SEE TURVALISES KOHAS! Teil läheb seda hiljem vaja. Vajutage Next.

Avaneb Collation Settings



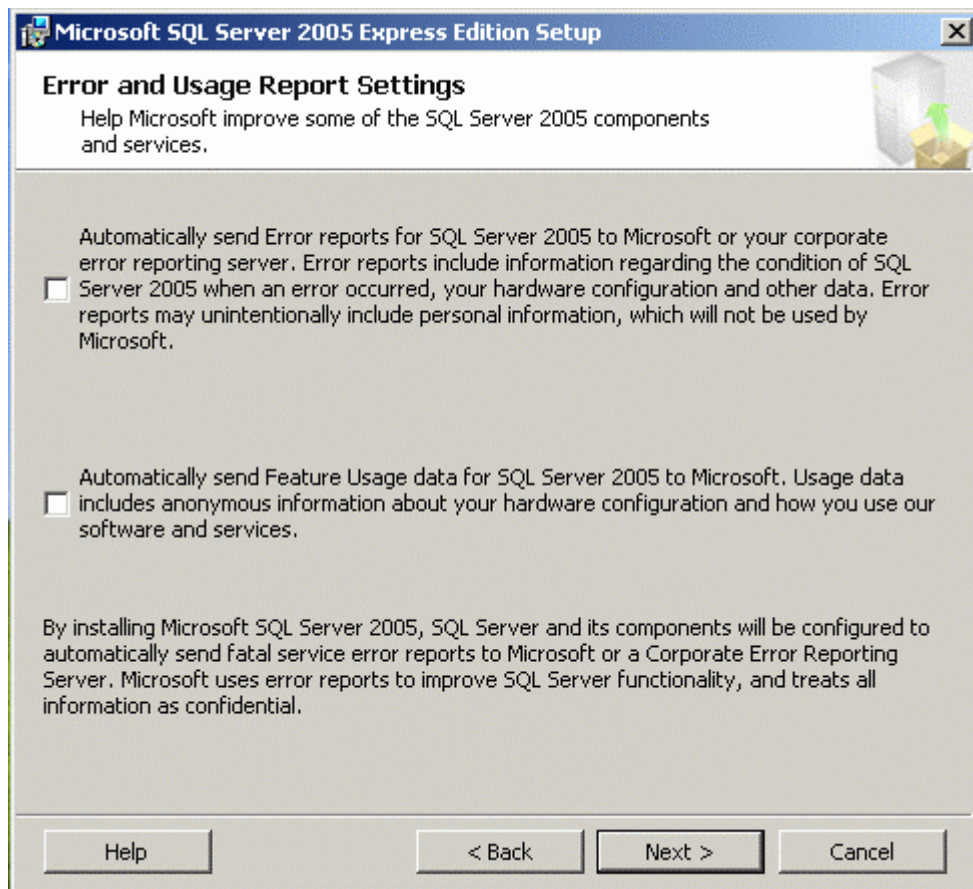
Valige “Collation designator and sort Order:” Estonian
Ja lisake linnuke “Accent – sensitive” ette
Vajutage Next.

Avaneb User Instances



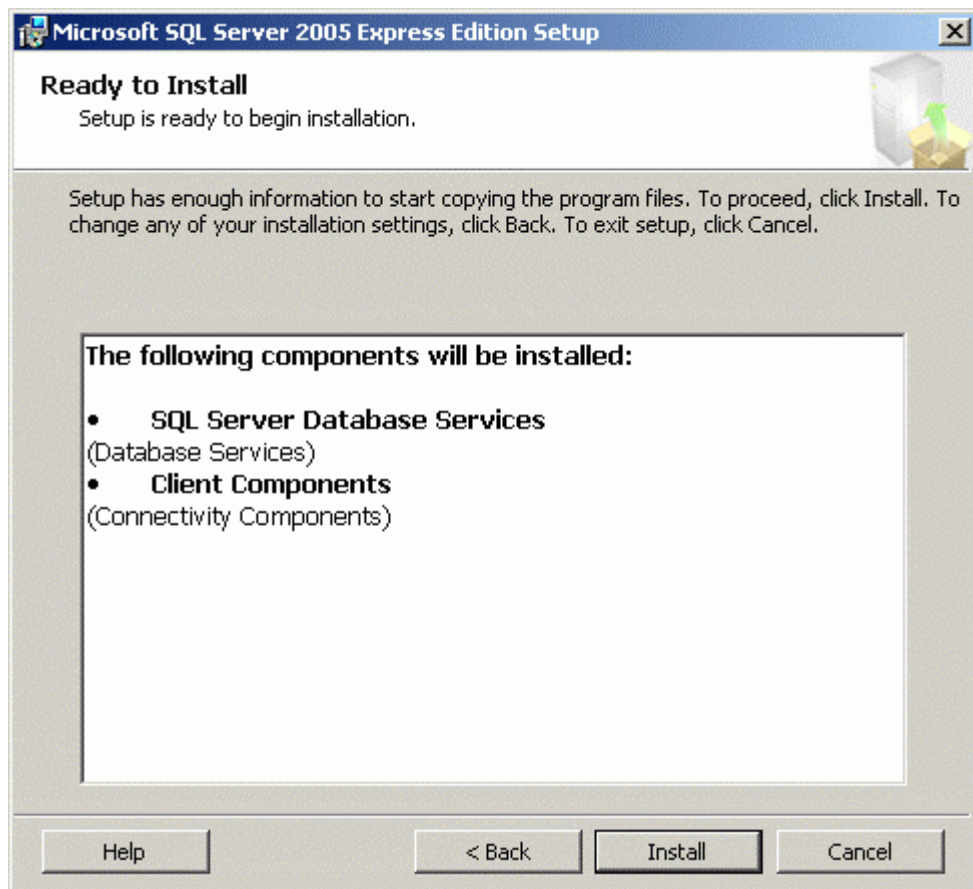
Vajutage Next.

Avaneb Error and Report Settings



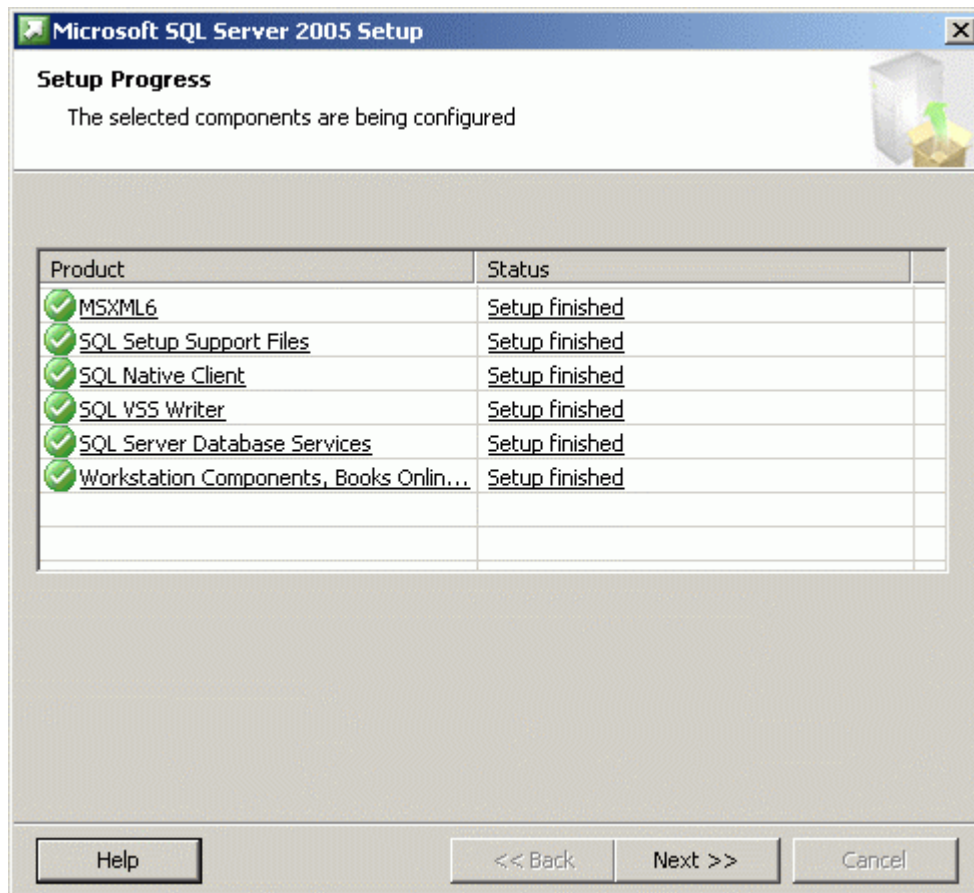
Vajutage Next

Avaneb Ready to Install



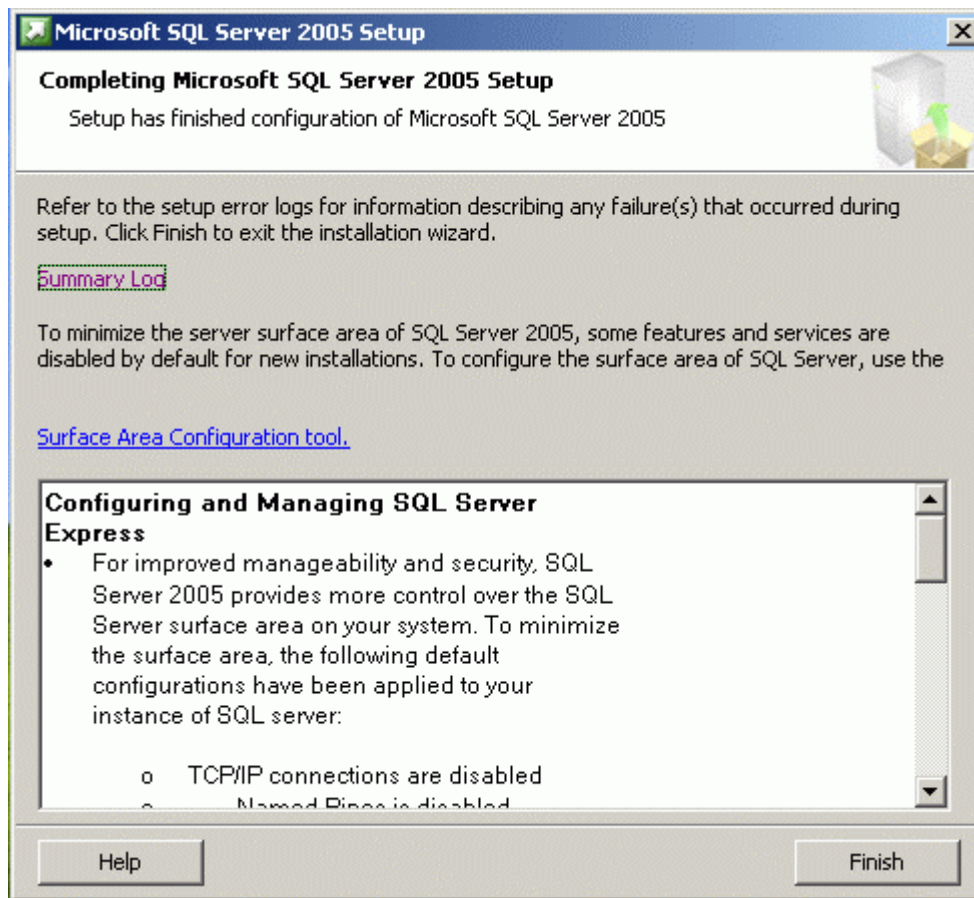
Vajutage Install

Sõltuvalt arvuti võimusest kulub nüüd natuke aega. Mille ajal näidatakse installi käiku.



Vajutage Next.

Avaneb ekraan kokkuvõtliku infoga



Valige **Surface Area Configuration tool**

SQL Server 2005 Surface Area Configuration

Microsoft
SQL Server 2005
Help Protect Your SQL Server

Microsoft
Windows Server System


Minimize SQL Server 2005 Surface Area

SQL Server 2005 improves manageability and security by giving administrators more control over the surface area of local and remote instances of SQL Server 2005. With the SQL Server 2005 Surface Area Configuration tools, you can easily:


- Disable unused services and network protocols for remote connections.
- Disable unused features of SQL Server components.

For new installations, use these tools to enable required features, services, and network protocols that are disabled by default. For upgraded instances, use these tools to identify and disable unused features, services, and protocols.

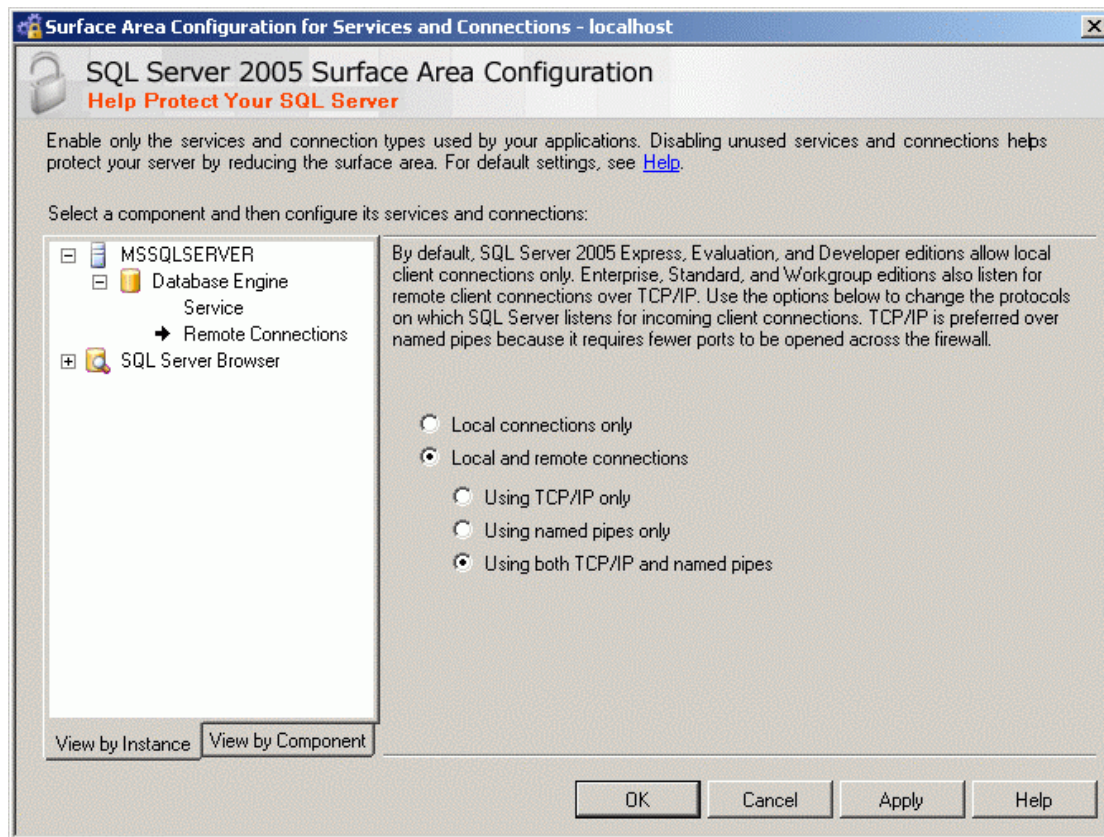
Users with administrative privileges on Microsoft Windows Vista and later versions will no longer have administrative privileges on this SQL Server installation by default. To explicitly add yourself as a SQL Server administrator, click on the below link:

-  [Add New Administrator](#)
-  [Read more about configuring the SQL Server surface area.](#)

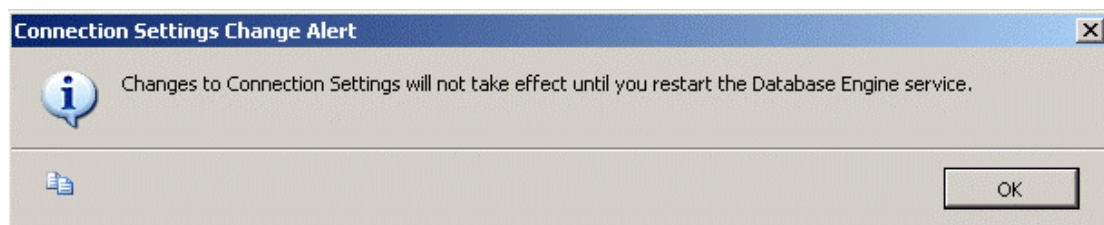
Configure Surface Area for localhost [\[change computer\]](#)

-  [Surface Area Configuration for Services and Connections](#)
-  [Surface Area Configuration for Features](#)

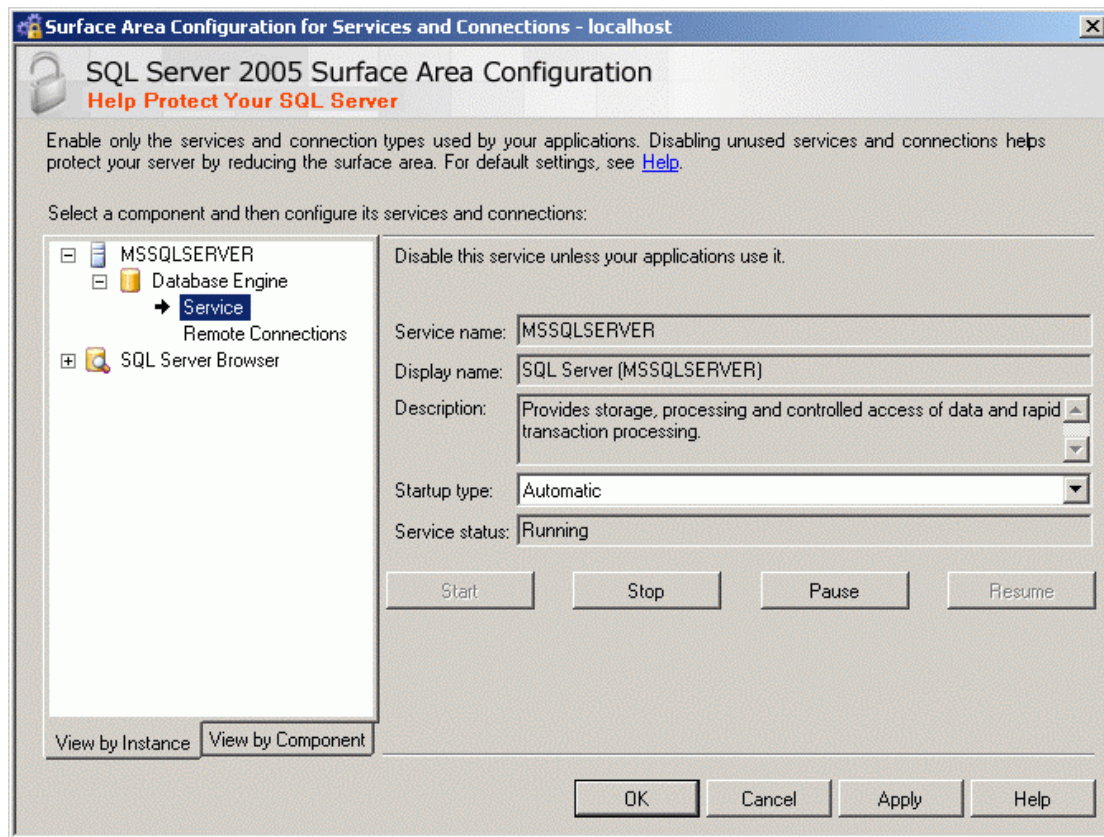
Valige Surface Area Configuration for Services and Connections



Valige vasakult poolt aknast “Remote Connections”. Seejärel märkige paremal pool “Local and remote connections” ja “Using both TCP/IP and named Pipes”.
Vajutage Apply. Tuleb teade

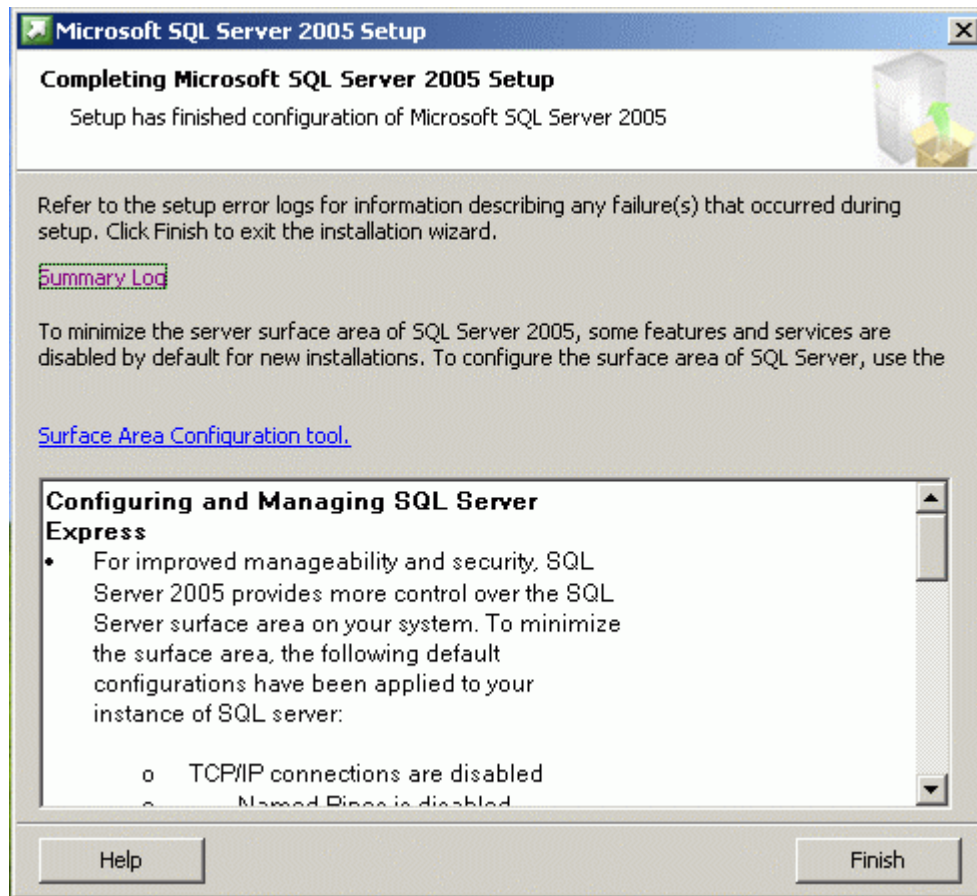


Vajutage OK.



Valige vasakult poolt Service. Vajutage Stop ja seejärel Start. Kui saate vea, siis on võimalik et Windows Firewall ei võimalda SQL serveri porti avada.(Lugege Lisa 1)
Kui käivitamine on lõppenud vajutage OK. Seejärel võite "SQL Server Surface Area Configuration" akna sulgeda.

Aktiveerige uuesti Microsoft SQL Server 2005 Setup Aken



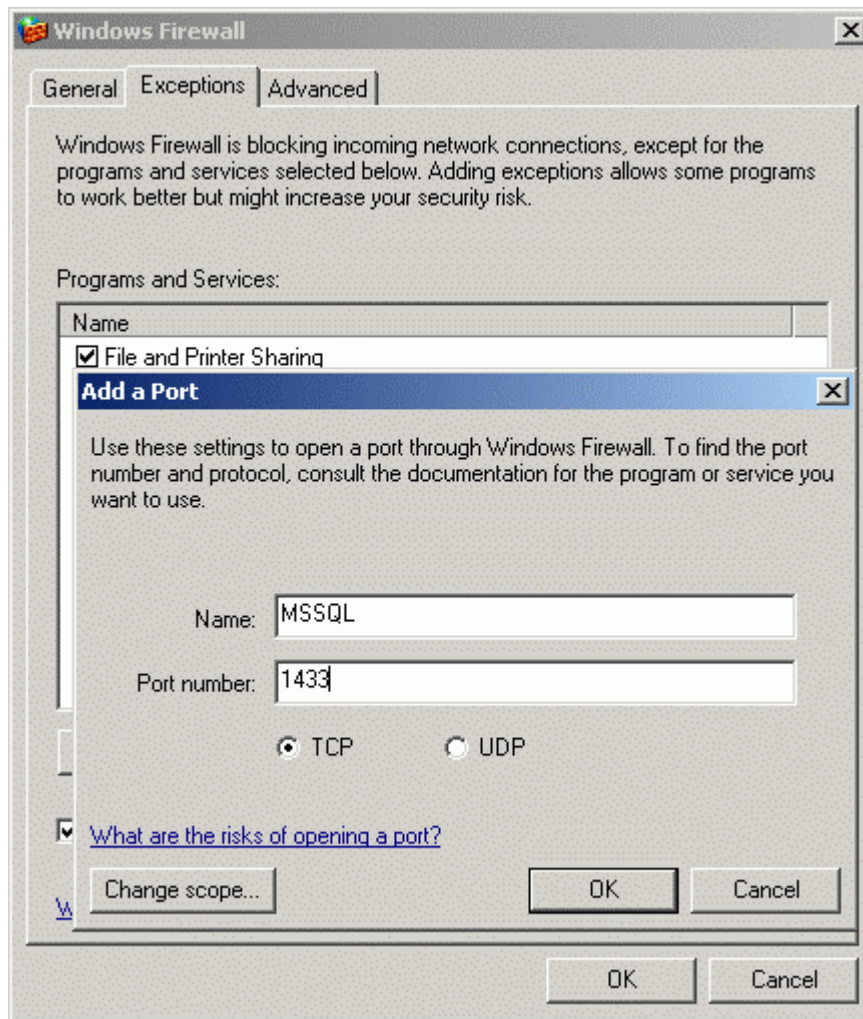
Vajutage Finish.

SQL Server Express on paigaldatud.

Lisa 1

SQL Serveri TCP pordi avamine.

Avage Control Panel->Windows Firewall



Valige kõrv Exceptions

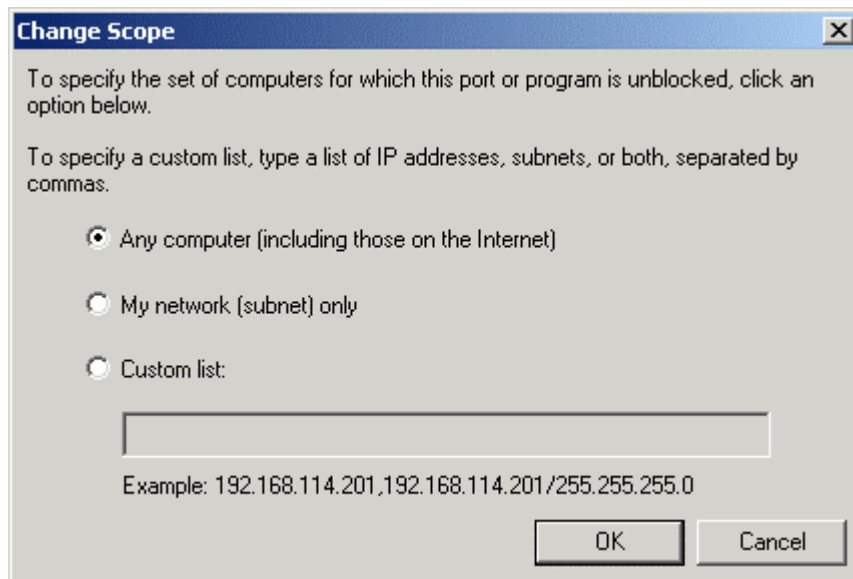
Vajutage nupule Add Port

Sisestage Name väljale MSSQL (või suvaline nimi)

Sisestage Port number väljale 1433

Valige TCP

Vaikimisi Lubatakse selle pordi poole pöörduda kõikidelt aadressidelt, kui tahate seda piirata, siis vajutage nupule Change scope



“Any computer” lubab ligipääsu kõigile, kui võrgus on väline tulemüür, siis väljaspoolt ikkagi enne sisse ei lubata kui on tehtud välise tulemüüri seadete muudatused

“My network (subnet) only” lubab SQL serverit kasutada sama võrgusegmeni arvutitel

“Custom list” lubab ligipääsu ainult nende nende arvutitele, kes on selles nimekirjas.

Vajutage OK. Ja Veel kord OK

Lisa 2

SQL Server Management Studio Paigaldus

Käivitage SQLServer2005_SSMSEE.msi

Vajutage Next.

Valige I accept the terms in the license agreement.

Vajutage Next.

Avaneb aken Feature Selection

Vajutage Next.

Avaneb aken Ready to Install the Program

Vajutage Install